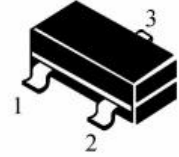
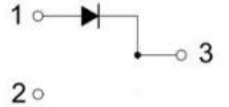
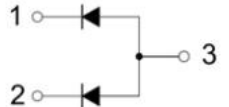
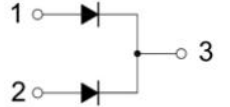
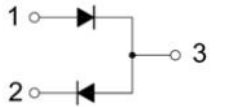


SOT-323 Schottky Barrier Diode 肖特基势垒二极管



Internal Configuration & Device Marking 内部结构与产品打标

Type 型号	BAT54TW	BAT54AW	BAT54CW	BAT54SW
Pin 管脚				
Mark 打标	KL5/L4	KL6/L42	KL7/L43	KL8/L44

Absolute Maximum Ratings 最大额定值

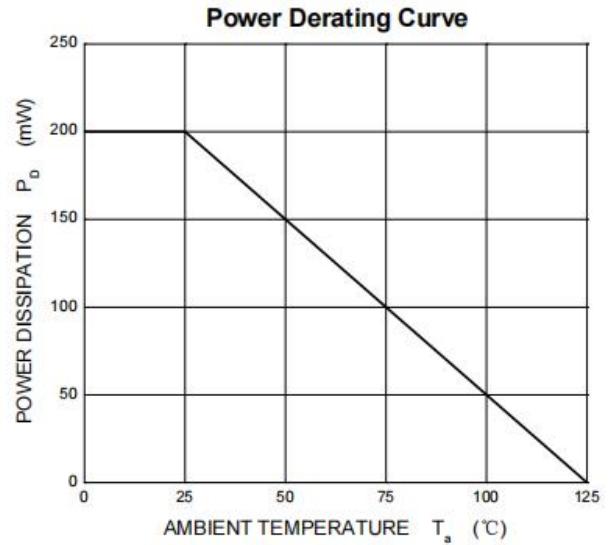
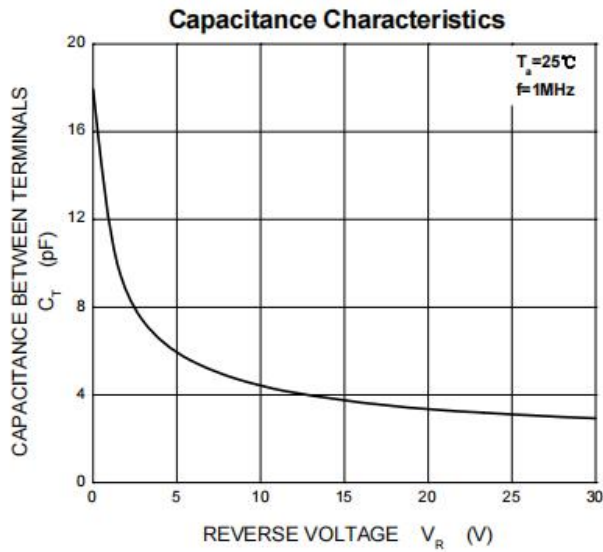
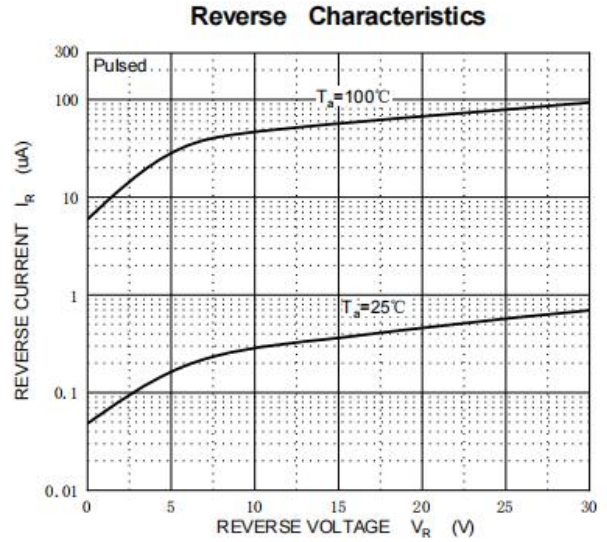
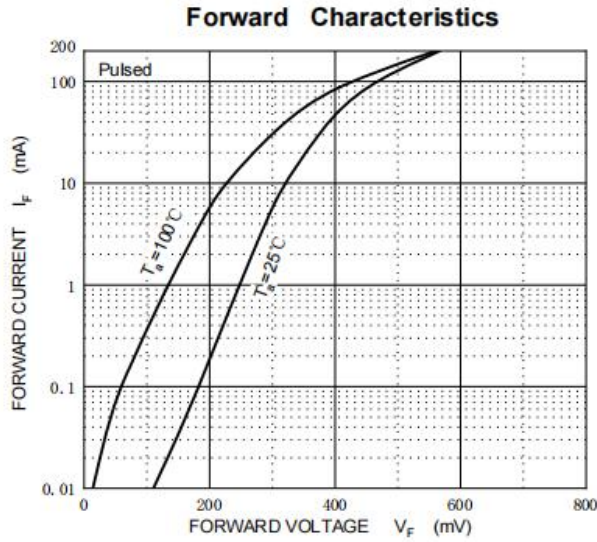
Characteristic 特性参数	Symbol 符号	Rat 额定值	Unit 单位
Peak Reverse Voltage 反向峰值电压	$V_{RRM}$	30	V
Reverse Work Voltage 反向工作电压	$V_{RWM}$		
DC Reverse Voltage 直流反向电压	$V_R$		
Forward Work Current 正向工作电流	$I_F(I_O)$	200	mA
Repetitive Peak Forward Current 重复峰值正向电	$I_{FRM}$	300	mA
Peak Surge Forward Current 峰值浪涌正向电流	$I_{FSM}$	600	mA
Power dissipation 耗散功率	$P_D(T_a=25^\circ C)$	200	mW
Thermal Resistance J-A 结到环境热阻	$R_{\theta JA}$	500	$^\circ C/W$
Junction and Storage Temperature 结温和储藏温度	$T_J, T_{stg}$	125, -55 to +150 $^\circ C$	

Electrical Characteristics 电特性

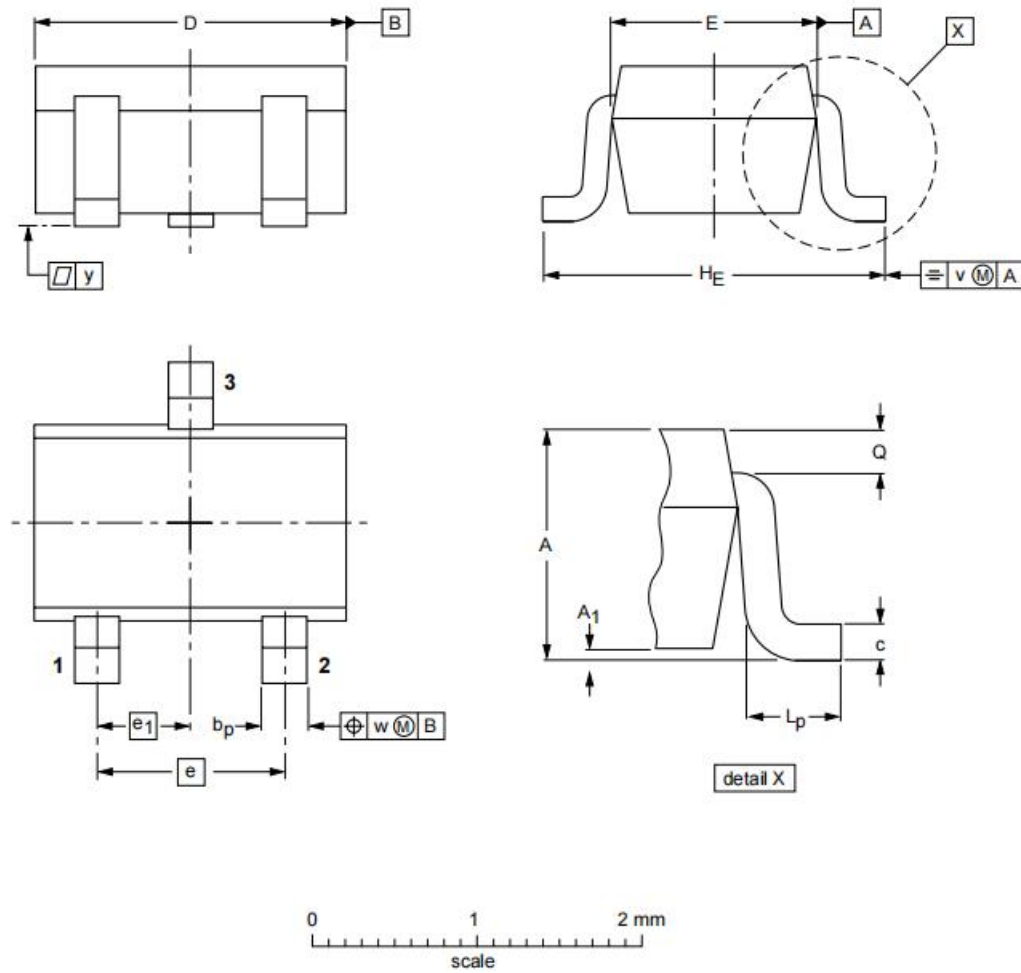
( $T_A=25^\circ C$  unless otherwise noted 如无特殊说明, 温度为  $25^\circ C$ )

Characteristic 特性参数	Symbol 符号	Min 最小值	Max 最大值	Unit 单位
Reverse Breakdown Voltage 反向击穿电压( $I_R=100\mu A$ )	$V_{(BR)}$	30	—	V
Reverse Leakage Current 反向漏电流( $V_R=25V$ )	$I_R$	—	2	$\mu A$
Forward Voltage( $I_F=0.1mA$ ) 正向电压( $I_F=1mA$ ) ( $I_F=10mA$ ) ( $I_F=30mA$ ) ( $I_F=100mA$ )	$V_F$	—	0.24 0.32 0.4 0.5 1	V
Diode Capacitance 二极管电容( $V_R=1V, f=1MHz$ )	$C_D$	—	10	pF
Reverse Recovery Time 反向恢复时间	$T_{rr}$	—	5	nS

■ Typical Characteristic Curve 典型特性曲线



■ Dimension 外形封装尺寸



DIMENSIONS (mm are the original dimensions)

UNIT	A	A <sub>1</sub> max	b <sub>p</sub>	c	D	E	e	e <sub>1</sub>	H <sub>E</sub>	L <sub>p</sub>	Q	v	w
mm	1.1 0.8	0.1	0.4 0.3	0.25 0.10	2.2 1.8	1.35 1.15	1.3	0.65	2.2 2.0	0.45 0.15	0.23 0.13	0.2	0.2